

# Instruction Manual

Air-hydraulic jack, A3216-C

---

**Important: Read and understand this manual before use!**

## WARNINGS - SAFE USAGE INSTRUCTIONS:

1. This is a lifting device only. Do not move or dolly the load while on the jack. The load must be supported immediately by other appropriate means.
2. Do not overload. Overloading can cause damage to or failure of the jack.
3. Lift only on areas as specified by the vehicle manufacturer.
4. Do not use more than the 3 standard extensions in sequence.
5. This jack is designed for use only on hard level surfaces capable of sustaining the load. Use on other than hard level surfaces can result in jack instability, damage and possible loss of load.
6. It is recommended that the wheels of a vehicle be chocked.
7. No person should remain in, on, or get bodily under a load that is being jacked or is supported only by a jack.
8. The safety valve being adjusted and sealed by the manufacturer shall not be adjusted.
9. Maximum permissible pressure: 12 bar (170 PSI).
10. Failure to follow these warnings may result in loss of load, damage to jack, and/or failure resulting in personal injury, property damage or even death.

## Preparation of the jack and assembly:

Please note that it is necessary to use a little oil for lubrication during assembly of the jack. During transport this oil may drip to the bottom of the carton. This is inevitable and not a sign of defect.

Unpack the jack and inspect for any damage. Oil the mechanical parts before starting up - and regularly thereafter.

**IMPORTANT:** When the jack has been turned over or upside-down a little oil will come into the hoses and come out with the pump exhaust. This is not a sign of defect and will stop after operating the jack for some time. Wipe away any excess oil.

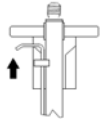
Connect the air hose. (Air pressure min. 8 bar - max.12 bar.) Maximum lifting capacity is achieved at 10-12 bar.

**IMPORTANT:** The air supply **MUST** be fitted with oil lubrication and water separator.

# Use of the jack:

## Transport:

The handle can be placed in 3 different positions by pulling the lever and moving the handle.



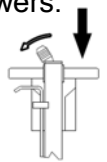
## Lifting a load:

The operating valve on the top of the handle should be turned slowly to the right, the pump is activated and the jack lifts.



## Lowering the load:

The operating valve on the top of the handle should be turned slowly to the left and the jack lowers. After use always be return the lifting cylinder to its lowest position to protect the cylinder.



# Maintenance:

**IMPORTANT:** Like other pneumatic tools the air pump of the jack needs oil for lubricating the moving parts. It is important to use a built-in air lubricator and water separator (filter) on the air supply nearby the air connection on the Jack.

Moisture and water may damage the jack even after a short time.

**USE ONLY ONE OF THE FOLLOWING TYPES OF OIL IN THE AIR LUBRICATOR: AGIP OSO 100, MOBIL DTE 27, ESSO TERESSO100, SHELL TELLUS 100, BP ENERGOL HP 100.**

**Weekly:** Lubricate the air motor by injecting a little oil into the air connection. Lubricate the cylinder wall and spread the oil by lifting to maximum position.

**Monthly:** Lubricate all moving parts with a few drops of oil. At the same time inspect the jack and extensions for damage and wear and tear.

**Refilling of oil:** Unscrew the filling plug at the side of the jack to refill. Correct oil level is up to the lower edge of the hole. The jack must be in horizontal position and cylinder in lowered position.

Quantity of oil: Please see under "Services" on [www.compac.dk](http://www.compac.dk) for correct oil level.

Any good hydraulic oil of viscosity 10°-32°cST/40°C can be used.

**NEVER USE BRAKE FLUID!**

# Possible faults and how to solve them:

- 1. The jack cannot lift to maximum height, and the pump runs continuously:** Check oil level and refill the oil tank if necessary.
- 2. The air pump operates slowly:** The air pump has not been lubricated enough, there is problems with the air delivery.  
Check if there is oil in the air lubricator, check if the lubricator is functioning correct.  
Check the air pressure, check if the air system is blocked.
- 3. The control valve cannot be moved or goes very slowly, even with pressure on the system:** The air supply is might be very watery and the lubricating film inside the valve has been washed away. Inspect the water separator and lubricator on the air supply. Loosen the fitting on the operating valve and fill the valve with oil. Operate the valve many times without air connected. Oil the jack more frequently.
- 4. In frosty weather: The jack will not pump:** There is too much water in the air supply, which has frozen. Mount a water separator with lubricator on the air supply. Change the oil of the jack, if there is water in it.  
Apart from the above, faults may arise after intensive use due to worn seals, which must then be replaced by new seals.
- 5. After using the jack for a long time if might be necessary to replace the seals.**

**Destruction:** When the jack after several years is worn and must be dismantled, the oil must be drained off and legally disposed of.