

Instruction Manual

Forklift Jacks, model: CFLJ4 / CFLJ5

Important:

BEFORE USING THIS JACK, READ THIS MANUAL COMPLETELY AND THOROUGHLY, UNDERSTAND ITS OPERATING PROCEDURES, SAFETY WARNINGS AND MAINTENANCE REQUIREMENTS. FAILURE TO DO SO COULD CAUSE ACCIDENTS RESULTING IN SERIOUS OR FATAL PERSONAL INJURY AND/OR PROPERTY DAMAGE.

The use of portable automotive lifting devices is subject to certain hazards that cannot be prevented by mechanical means, but only by the exercise of intelligence, care and common sense. It is therefore essential to have owners and personnel involved in the use and operation of equipment who are careful, competent, trained, and qualified in the safe operation of the equipment and its proper use. Examples of hazards are dropping, tipping, or slipping of motor vehicles or their components caused primarily by improperly securing loads. Overloading, off-centred loads, use on other than hard level surfaces, and using equipment for a purpose for which it was not designed. It is the responsibility of the owner to make sure all personnel read this manual prior to using this device. It is also the responsibility of the device owner to keep this manual intact and in a convenient location for all to see and read. If the manual is lost or not legible, contact Compac for a free replacement Via www.compac.dk. If the operator is not fluent in English, the product and safety instructions shall be read to and discussed with the operator in the operator's native language by the purchaser/owner or his designee, making sure that the operator comprehends its contents.

WARNING! :

- Before lifting a vehicle, refer to the vehicle's service manual or inquire from the vehicle manufacturer the recommended jack lifting points and jack stand support surfaces on the vehicle chassis.
- Every jack owner is responsible for keeping the jack label clean and readable. Use a mild soap solution to wash external surfaces of the jack but not any moving hydraulic components. Contact Compac for a replacement label if your jack's label is not readable.
- Inspect the jack before each use. Do not use the jack if any component is cracked, broken, bent, shows sign of damage, if it is in poor condition or leaks hydraulic fluid. Do not use the jack if it has loose or missing hardware or components, or is modified in any way. Take corrective action before using the jack again.
- This jack was designed for lifting purposes only. Do not attempt to work on the vehicle until jack stands rated equal to or greater than the rated capacity of the jack are positioned to support the load.
- Do not move or dolly the vehicle while on the jack.
- Do not use the jack beyond its rated capacity. Lift only dead weight.
- Centre load on saddle. Be sure setup is stable. Off-centre loads can cause jack failure and/or loss of load.
- Use the jack on a hard level surface. The jack must be free to roll and reposition it self while lifting or lowering the vehicle.
- Do not modify the jack or use saddle adapters or saddle extenders unless approved or supplied by Compac.
- Always lower the jack slowly and carefully.
- Do not attempt to make any hydraulic repairs unless you are a qualified hydraulic repair person that is familiar with this equipment.

Warranty:

These floor service jacks are covered by the "no bull" Compac Warranty. For details see warranty papers following this product.

Mounting:

Remove the handle receiver bolt from the handle receiver. Insert the handle in the handle receiver so that the "L" slotted hole in the handle aligns with the threaded bolt hole in the handle receiver. The handle receiver bolt has a non-threaded tip which must enter the "L" slotted hole in the handle. Sometimes it is necessary to rotate the handle back and forth while simultaneously threading the handle receiver bolt into the "L" slotted hole. You can feel when the bolt enters the "L" slotted hole.

Operating instructions:

1. Become familiar with the operation of the handle, foot pump and air valve button. Pumping one of the three will enable the jack lift arm to be raised. Pulling on the handle and turning the handle in a clockwise direction 1/4 turn will enable the jack lift arm to be lowered.
2. With the jack in the lowered position, push the jack under the vehicle. **IMPORTANT:** Use the manufacturer's recommended lifting procedures and lifting points before lifting loads.
3. Pump the jack handle, foot pump to raise the lifting saddle up to the recommended lifting point. Check to see that the lifting point is centred on the lifting saddle and the majority of the weight is not supported by the peripheral edge of the lifting saddle at any single point.
4. **IMPORTANT:** Check to see that the ground surface around the jack is free from wheel obstructions such as gravel, tools, or uneven joints or edges. The jack will have a tendency to reposition itself during the lifting process and therefore should not be hindered by wheel obstructions.
5. Proceed with pumping the jack handle so the load is lifted to the required work height. The foot pump is used for fast lifting to the load, not lifting the load.
6. After lifting the load, always use approved vehicle support stands with an adequate capacity rating to support the load before making any repairs or adjustments. Position and adjust the stands under the load at points that will provide stable support.
7. Lower the load **SLOWLY AND CAREFULLY** onto the support stands by pulling and turning the jack handle 1/4 turn in a clockwise direction very slowly. Although jack stands are individually rated, they are to be used in a matched pair to support one end of a vehicle only. Stands are not to be used to simultaneously support both ends or one side of a vehicle.
8. For further instructions (see lifting instructions)

Lifting instructions :

Note the following hazards!

This unit has two lift points:

- 1: On top of cylinder / Pole (where high reach is required)
- 2: In the notch at the end of the lifting arm
 - 2.1: used as a serrated saddle (for lifts on flat underside)
 - 2.2: used as a cradle (with serrated saddle inside arm)

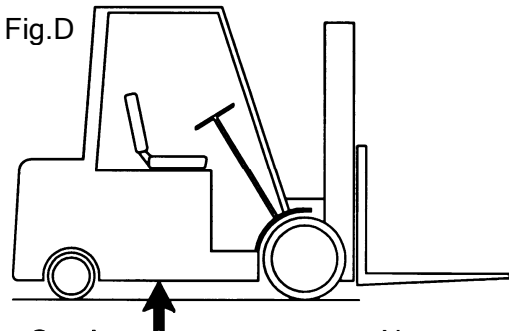
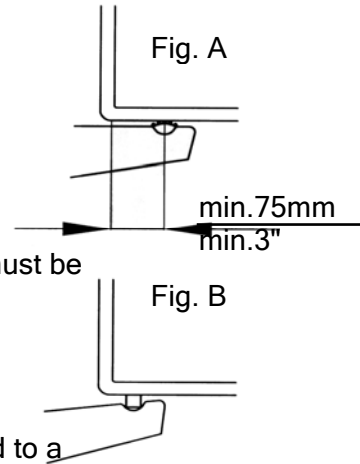
Lifting:

Select a point of lifting on the forklift - strong enough to resist the lifting force without damage to the forklift.
If you use the low end of the jack - note the following:

- B1:** Lift on a flat underside: Use the serrated saddle. Observe that the distance between the lift point and the edge of forklift must be min. 3" / 75mm (see fig. A)
Do not lift to an angle higher than 15 ° from the ground. This may otherwise result in the jack kicking out suddenly and dropping of the load.

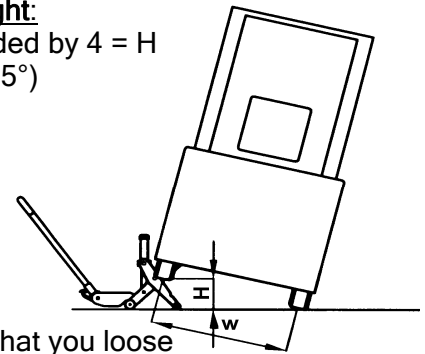
- B2:** If you use the cradle point for lifting (fig. B) -you may lift the load to a maximum height of 1/4 of the tread width of the forklift (e.g. tread width 40" divided by 4 = 10" max lift height) (see fig C)

Lift on fender with lift point A is recommended where structure of fender can resist the lifting force without damage to the fork lift



Lifting on the side of the forklift:
Lift in the point of balance . to avoid tilting of the forklift to

Max. height for safe lift height:
 $W \text{ divided by } 4 = H$
(max 15°)

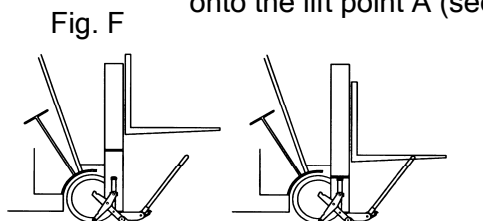


Caution:
Lift on point of balance

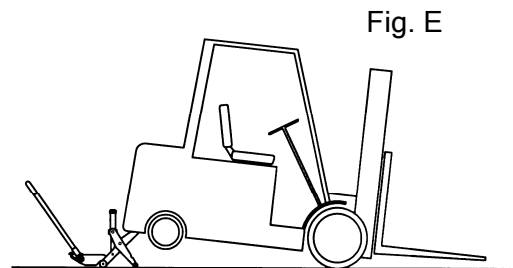
Never push the jack so far under the truck - that you lose visible contact with the point of lifting.
The load may not be lifted by the notch lift point - but by another point of the lift arm -this may result in slipping of the load!!

Lift on rounded/sloped points -like counter weight areas is not allowed -due to danger of slipping of the load. (see fig. E)

Lift on mast is not recommended. We propose to lower the forks of the mast onto the lift point A (see fig. F)



Caution:
Do not lift fork mast - use as support only to lower fork mast on.



Caution:
No lift on sloped / rounded points

Preventive Maintenance:

Always store the jack in a well protected area where it will not be exposed to inclement weather, corrosive vapours, abrasive dust, or any other harmful elements. The jack must be cleaned of water, snow, sand, or grit before using.

1. The jack must be lubricated periodically in order to prevent premature wearing of parts. General purpose grease must be applied to caster wheels, front axle wheels, elevator arm, handle base pivot bolts, release mechanism and all other bearing surfaces. See the exploded view parts drawing for the location of the above mentioned parts. Failure to maintain proper lubrication voids warranty.
2. It should not be necessary to refill or top off the reservoir with hydraulic fluid unless there is an external leak. An external leak requires immediate repair which must be performed in a dirt-free environment by qualified hydraulic repair personnel who are familiar with this equipment.

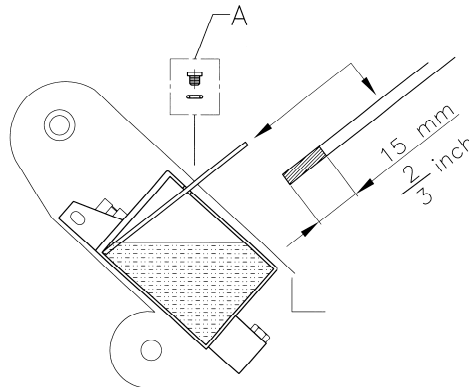
WARNING!

In order to prevent seal damage and jack failure, never use alcohol, hydraulic brake fluid, or transmission oil in the jack.

Recommended types of oil of viscosity 22° cSt - : 40° C: Castrol Hyspin AWS 22, Shell Tellus S22, BP HLP 22, Esso Unavis N22, Mobil DTE 22 or similar oil

Check: Oil level CFLJ

Unscrew top plate over oil tank/ pump.
Unscrew lid A from oil tank.
Lower jack to low position.
Measure oil level with a pin, by placing this as shown on drawing below.
Oil level should be 15mm/ 2/3".



Bleeding of CFLJ

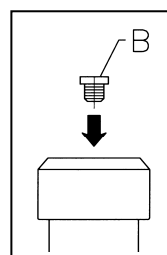
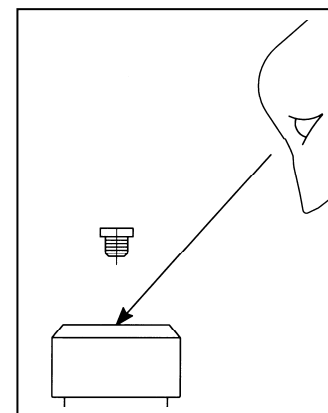
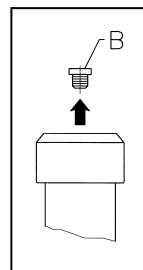
Check oil level as above.
Make sure oil level is 15 mm/ 2/3"
Bring jack to low position.
Unscrew lid A from oil tank.

1. Unscrew bolt B on power cylinder (see drawing).

2. Activate the jack, by pumping gently with the foot pedal, until oil appears in the hole for bolt B.

3. Mount bolt B again. (See drawing).
4. Pump the jack to max position.
5. Lower the jack to low position.
6. Repeat point 4 to 5 and go to 7.
7. Bleeding ends by mounting bolt A in oil tank.

! Measure Oil Level with jack in Low Position ONLY !



Trouble Shooting:

The jack arm does not lift - after pumping effort:

1. Check that the handle is not activated on "release"

If no success/effect:

2. Try to flush oil from the pump into the cylinder - by continued pumping and release effort.

If no success/effect:

3. Try to hit the release spindle (114) gently with a hammer placed below the handle base.

If no success/effect:

4. Try to check the play on spindle (114). If there is no play - the nuts (128) may be tightened too far on the spindle - creating too much tension on spring (115). Loosen outer nut one round anticlockwise and let the inner follow - Span nuts firmly again.

The jack arm appears soft or does not lift to the expected height:

1. Check oil level - possibly refill oil. (*See maintenance*) With oil lid off.: From low position - with no load - lift to high position and release. Repeat operation

2. Sometimes air gets trapped in the hydraulic system during shipment. An air bound hydraulic system feels spongy when pumped and sometimes the jack will not pump full incremental strokes.

PURGING AIR FROM THE HYDRAULIC SYSTEM

- a) Open the release valve by pulling and rotating the handle clockwise 1/4 turn while simultaneously activating the foot pump 10 to 15 times.
- b) Close the release valve by turning the handle in a counter clockwise direction.
- c) Pump the jack until the lift arm is extended to maximum height.

If the condition seems better, repeat steps "a" through "c" until all the air is purged from the system.

Decommissioning:

If the jack should ever be scrapped, draw off the oil into an approved container and dispose it at an approved authority.